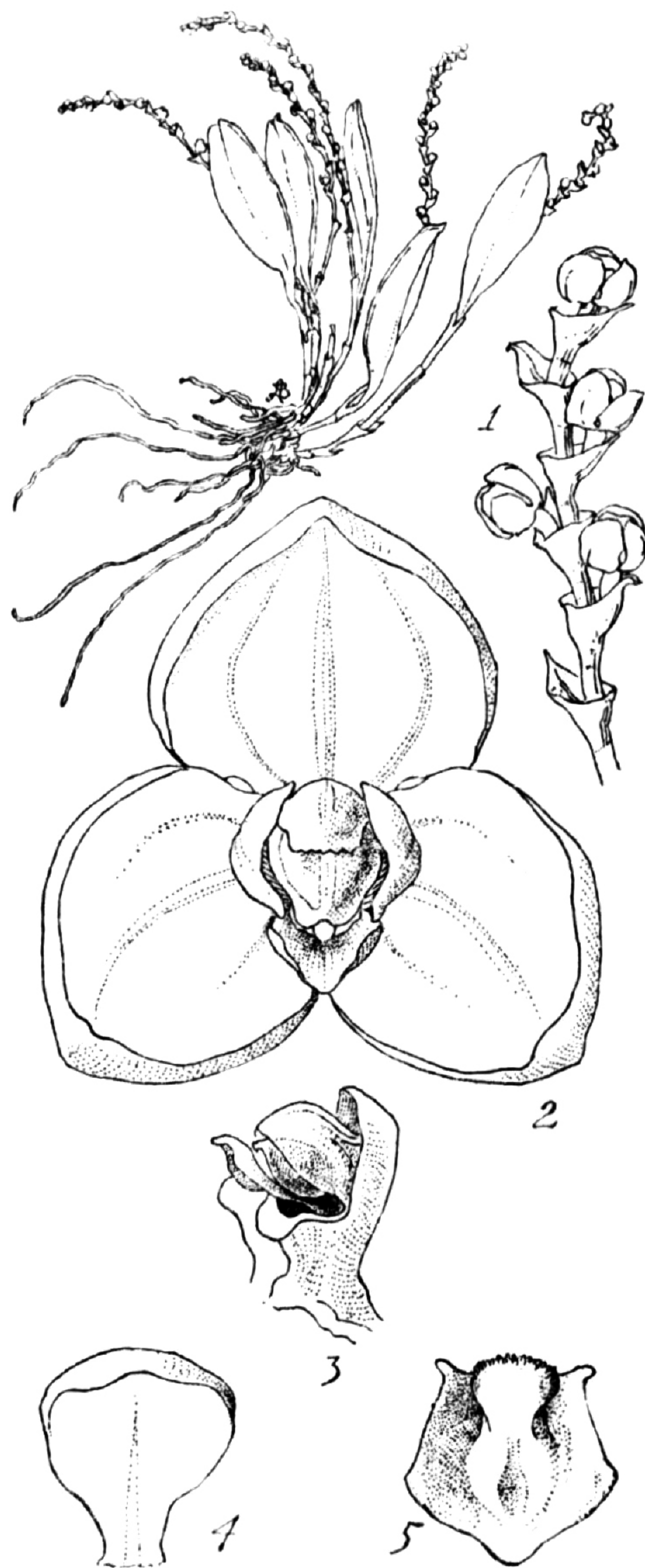


Stelis Storkii *Ames sp. nov.*

Radices fibratae, albidae, glabrae. Caules secundarii dense caespitosi, vaginis amplis obtecti, monophylli. Folia oblanceolata, bene marginata, coriacea, apice breviter apiculata, infra medium in petiolum sulcatum gracilem angustata. Pedunculi filiformes, infra racemum paucibracteati. Racemi plus minusve novemflori, folium superantes. Bracteae inflorescentiae infundibuliformes. Sepala lateralia orbiculari-ovata, marginata, plus minusve carnosa, glabra, leviter concava. Sepalum dorsale simile. Petala cuneato-flabellata, leviter concava, apice leviter incrassata, per medium uninervia. Labellum cuneato-orbiculare, breviter unguiculatum, per medium callo ornatum. Columna brevis, apice trilobata, rostello linguiformi instructa.

A diminutive epiphyte with fibrous, whitish, smooth, spreading roots. Secondary stems monophyllous, densely caespitose, 1–1.5 cm. long, clothed with three or more elongated tubular sheaths of which the uppermost extends nearly to the axil of the leaf. Leaf 1–2 cm. long, 3–5 mm. wide, oblanceolate with a short apiculate apex, very fleshy, lightly triquetrous, narrowed from about the middle into a slender sulcate petiole. Peduncles one or two in the axil of the leaf, up to 3 cm. long including the raceme, emerging from a scarious conduplicate sheath, bearing about two tubular bracts below the lowermost flower. Raceme 1.5–2 cm. long, loosely flowered. Bracts of the raceme about 2 mm. apart, infundibuliform, 0.5 mm. long. Flowers smooth, yellowish. Lateral sepals 1 mm. long, about 1 mm. wide, orbicular-ovate, obtuse, rather fleshy, 1–3 nerved, with a keel on the mid-nerve on the outer surface. Dorsal sepal similar, usually 3-nerved. Petals about 0.75 mm. long, cuneate-flabellate, slightly concave, thickened toward the tip, 1-nerved. Labellum about 0.75 mm. long, 0.75 mm. wide, cuneate-orbicular or pentagonal, minutely auriculate at base, with a raised callus extending from the base beyond the centre of the disc. Column scarcely 1 mm. long, 3-lobed at the summit with the posterior lobe erect, rounded at the tip or paucidentate, in length equal to or longer than the



STELIS Storkii Ames

EXPLANATION OF ILLUSTRATION

STELIS STORKII Ames. Plant drawn natural size. 1, part of the raceme several times enlarged. 2, flower enlarged about 25 times. 3, column, much enlarged, showing stigmatiferous lobes, anther *in situ*, rostellum and posterior lobe. 4, petal enlarged about 17 times. 5, labellum enlarged about 15 times.

Drawn with the aid of the camera lucida from specimens preserved in alcohol by **BLANCHE AMES**