



19. **STELIS RETROVERSA** Duque, sp. nov.

(Pl. VII, 1-3; Pl. XIV, 1)

Planta pusilla caespitosa. Radicibus filiformibus flexuosis. Caulibus erectis brevibus duobus vaginis dilatatis amplectentibus. Folio erecto oblongo obtuso, basi sensim in petiolum angustato. Racemo flexuoso paucifloro. Bracteis amplis, apiculatis, fere acutis, cuculatis. Flores considerantur parvae. Sepalis ovatis obtusis retrorsis. Labello crasso, oblongo, apice rotundato, stigmatibus bilobulato.

TIPO: Colombia, Antioquia; epífita en monte neblinoso, Municipio de Ituango, alt. 2.100 m, Manuel Zapata, florecida en mayo 2, 1991. O. Duque 1308

(Holotipo: JAUM). Manuel Zapata, en monte neblinoso Alt. 2.300 m entre Yarumal y Ventanas, marzo 7, 1992, O. Duque 1436.

ETIMOLOGIA: del latín *retro*, atrás, y *versus*, hacia, por la posición retrógrada de los sépalos en la anthesis.

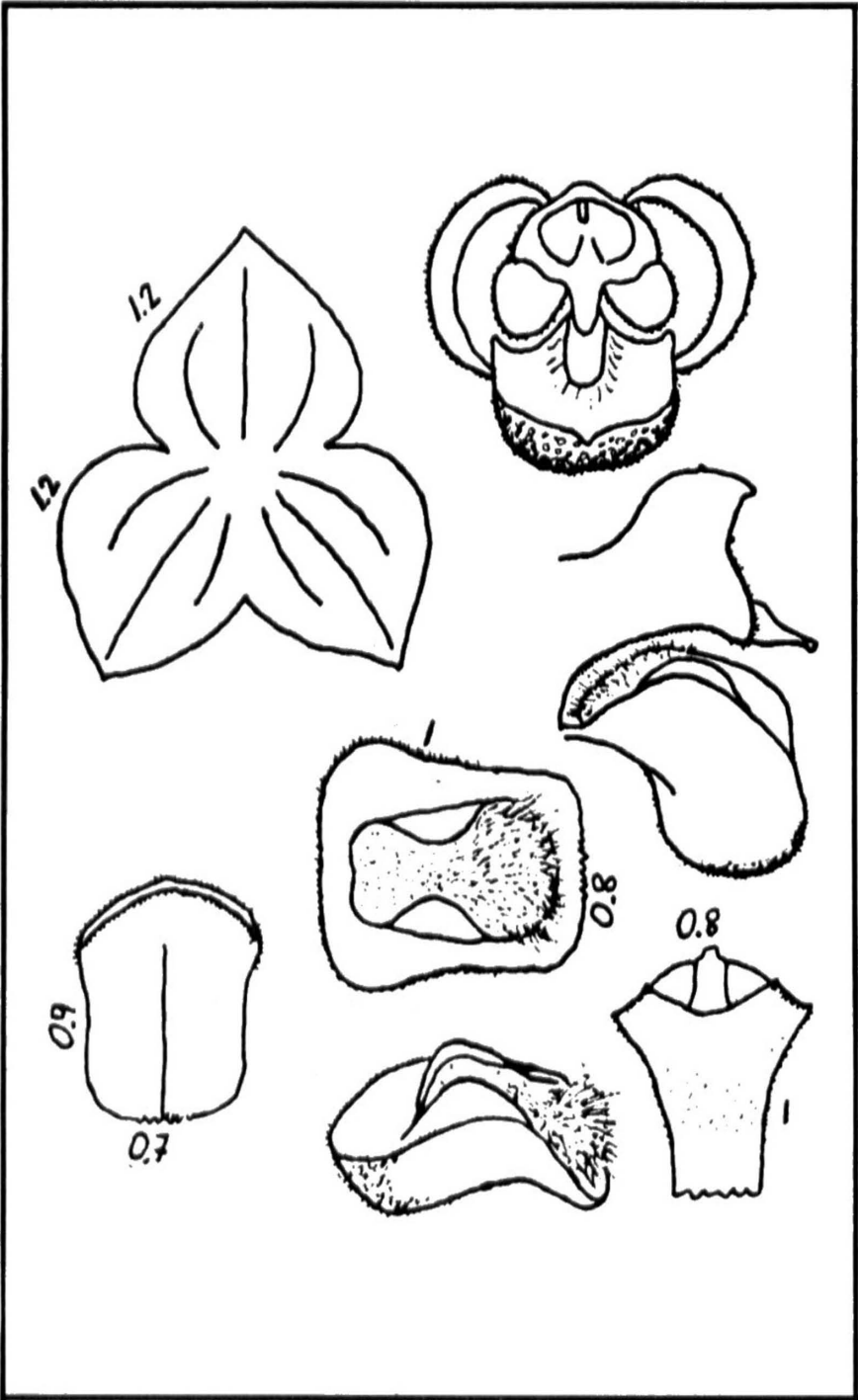
From the Latin *retro*, back, behind, and *versus*, towards, to indicate the retrorse position of the sepals in anthesis.

Planta diminuta, epífita, cespitosa. Tallos cortos de 0.8-1.5 cm, cubiertos por vainas laxas. Hoja oblonga 2 x 0.6 cm, peciolada. Racimo fractiflexo con pequeñas florecitas hacia el extremo. Sépalos verdosos doblados hacia atrás, 3-venas. Pétalos delgados, semilunares en posición natural, subcuadrados en contorno, 1-vena. Labelo oblongo en forma de saco abierto, oscuramente trilobado, con un callo grande veloso.

Plant diminute in size, epiphytic, caespitose; roots slender fasciculate. Secondary stems approximate, unifoliate 0.8-1.5 cm long, covered by 2-3 loose inflated sheaths. **Leaf** oblong-elliptic, erect, coriaceous, the blade 2 cm long, 0.6 cm wide, the apex subacute tridenticulate, petiole 0.7 cm long. **Inflorescence** a strongly flexuous 5-6.5 cm long raceme bearing a few flowers toward the extremity, from a very small spathe at the base of the leaf. Floral bracts large, 1.5 mm long, wide and acute at the ostium, oblique, separated by 3-6 mm intervals. Pedicel 2 mm long; ovary 1.5 mm long. Flowers diminute; **sepals** similar, greenish-pink, broadly ovate, connate at the base forming a small cup, glabrous, 3-veined; patent in the recently opened flower, the sepals bend backwards at anthesis, to close again after pollination, 1.2 mm long, 1.2 mm wide. **Petals** semi-lunate in their natural position, subquadrate in outline, 0.9 mm long, 0.7 mm wide, slightly thickened and erose at the rounded apex, 1-veined. **Lip** oblong, in the form of a sack, when seen from the side, subquadrate from above, obscurely 3-lobed, the face cup-like with a minutely vesicular rim, 1 mm long, 0.8 mm wide; the disc occupied by a massive callus of soft villous tissue, constricted at mid-side by two solid masses. **Column** 1 mm long, 0.8 mm wide, with a short incurved foot, the stalk shortly villous.

NOTAS: *S. retroversa* comparte el escapo fractiflexo con otras varias especies de *Stelis*, entre ellas *S. wercklei*, *S. flexuosa*, y *S. londonnii*, y la posición retroversa de sus sépalos con otras especies como *S. hylophila*, pero es diferente de todas estas plantas. *S. retroversa* se reconoce fácilmente por su pequeño tamaño, el escapo fractiflexo con pocas flores hacia el extremo, y las florecitas diminutas con los sépalos echados hacia atrás.

S. retroversa shares its fractiflex scape with several species of *Stelis*, among them *S. flexuosa*, *S. wercklei*, *S. concinna*, *S. londonnii*, and its retror-



se sepals with others like *S. hylophila*, but it is different from all of these plants. *S. retroversa* is easy to recognize by its small size, its fractiflex scape with diminute flowers toward the extremity, its retrorse sepals, and by its saccular lip.