

12. **STELIS INCLINATA** Duque, sp. nov.

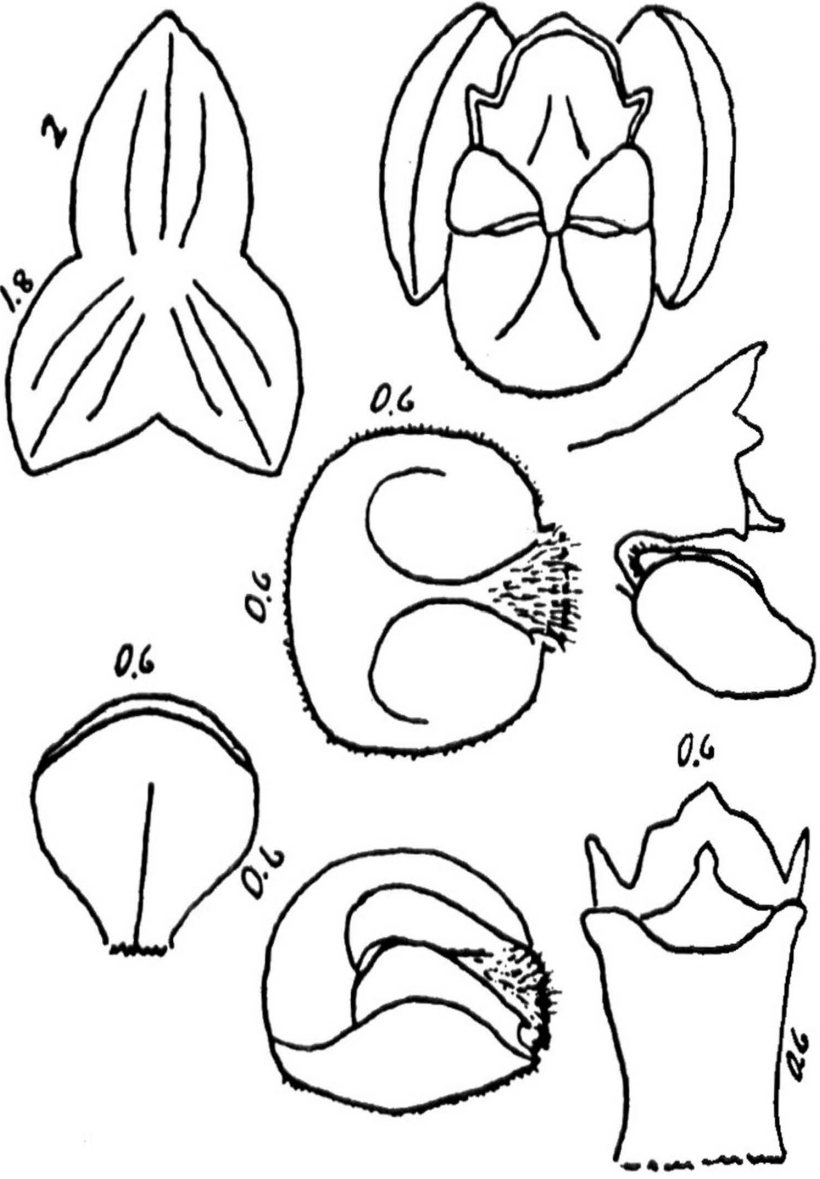
(Pl. IV, 6-8; Pl. XI, 4)

Planta mediocris epiphytica rhizomatosa. Folis ligulatis, angustis, longioribus caulibus. Racemo elongato laxe multifloro. floribus parvis viridicentibus nutantibus. Sepalis ovatis, obtusis, glabris, sépalo intermedio erecto, lateralibus obliquis. Petalis tenuibus, obovatis, uninervis. Labello lateri oblongo, obtuso, apice rotundato, callo bilobato cum basi pubescente.

TIPO: Colombia, Antioquia: paraje El Bihao, municipio de Cocorná, 2 km abajo del peaje carretera Medellín-Bogotá alt. 2.000 m en monte neblinoso, florecida en marzo 30,1996; O. Duque 1914 (Holotipo: JAUM).

ETIMOLOGIA: del latín *inclinatus*, inclinado, en referencia a la posición casi péndula de las flores.

4



From the latin *inclinatus*, inclined alluding to the almost pendulous disposition of the flowers on the rachis.

Planta mediana con rizoma corto ascendente, tallos espaciados, de 3 a 5 cm de largo. Hoja en cinta angosta 7 x 0.5 cm. La inflorescencia es un racimo de 11 cm de largo con florecitas verde claro, espaciadas, inclinadas, casi péndulas. Pétalos libres glabros 2 x 0.9 mm, 3 venas. Pétalos obovados 0.6 x 0.6 mm, 1-vena. labelo oblongo obtuso, la cara suborbicular, el callo formado por dos masa oblongas, la base vellosa.

Plant medium in size, epiphytic, shortly scandent, roots slender fasciculated. Secondary stems erect, spaced 2-5 mm, slender, 3-5 cm long with two short sheaths at the base and another one at the middle. **Leaf** erect, ligulate, subacute tridenticulate at the apex, the lamina 7 x 0.5 cm narrowing below into the canaliculate 1.5 cm long petiole. **Inflorescence** an erect loosely many-flowered raceme 11 cm long including the 1.5 cm long peduncle, from a thin acute spathe at the base of the leaf. Floral bract infundibular, shortly apiculate 1.3 mm long. Pedicel 1.4 mm long, ovary 1.4 mm long both arched so that the flowers are nutant. Flowers very small, light green. **Sepals** free, connate at the base, similar, glabrous, ovate obtuse, 3-veined, the dorsal sepal erect 2 x 0.9 mm, the lateral sepals slightly smaller, oblique forward; **petals** thin, obovate, cucullated 0.6 mm long, 0.6 mm wide, 1-veined. **Lip** laterally oblong obtuse, suborbicular from above, the face rounded slightly concave, the surface erose or shortly villous, the callus two oblong masses separated by the glenion, the base villous unguiculated, 0.6 mm long, 0.6 mm wide. **Column** stout 0.6 x 0.6 mm the clinandrium tricuspid, stigma bilobed.

NOTAS: como *S. inclinata*, varias especies de *Stelis* tienen flores nutantes, entre ellas *S. nutans* Lindl., *S. nutantiflora* Schltr., *S. hymenantha* Schltr., *S. macropoda* Schltr., pero ninguna es igual a *S. inclinata* ni en el hábito ni en la estructura de la flor. *S. inclinata* es una planta mediana de rizoma cortamente reptante los tallos gráciles, la hoja acintada estrecha. El racimo es distintivo por sus florecitas casi péndulas y el sépalo dorsal proyectado horizontal.

Like *S. inclinata*, some of the species of *Stelis* have nodding flowers, among them *S. nutans* Lindl., *S. nutantiflora* Schltr., *S. hymenantha* Schltr., *S. macropoda* Schltr., but they are different from *S. inclinata* in their habit and in the structure of their flowers. *S. inclinata* is a medium sized plant, the rhizome shortly scandent, the secondary stems slender, the leaf narrowly ligulate, the raceme distinctive with its nodding flowers.