

2. **STELIS BARBUDA** Duque, sp. nov

(Pl. I, 4-6; Pl. IX, 2)

Planta grandis caespitosa. Caulibus secundariis erectis folio oblongo longioribus. Racemo multifloro. Bracteis magnis, disticis imbricatis. Floribus grandibus rubris apertis. Sepalis ovatis obtusis. Petalis rombo-semicircularibus, apice incrassato. Labello crasso subquadrato, callus pubescente.

TIPO: Colombia, Antioquia: epífita en los montes neblinosos que rodean a Urrao, alt. 2.300 m Manuel Zapata, oct. 10,1995. Floreció en cultivo enero 9,1996. O. Duque 1896 (Holotipo: JAUM).

ETIMOLOGIA: derivado del latín *barba*, barba en alusión al mechón de cortos pelos que corona el amplio glenion.

Derived from the latin *barba*, beard alluding to the the tuft of short hairs that caps the wide glenion.

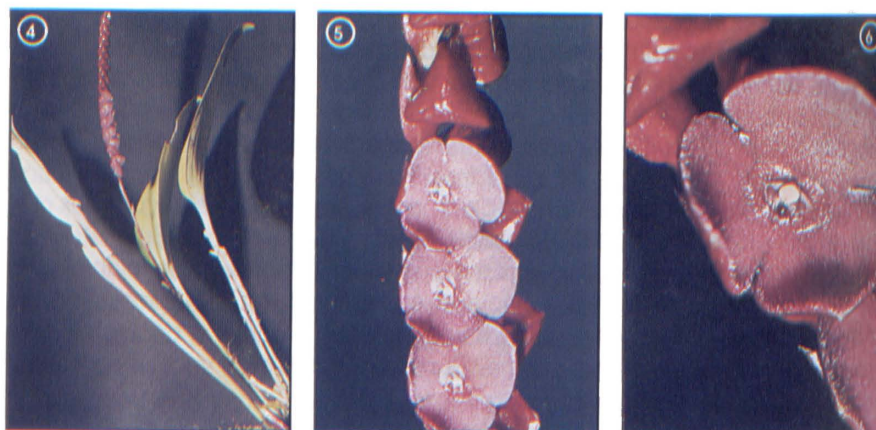
Planta grande con tallos largos erectos, hojas elípticas pecioladas 12 x 4 cm, racimo largo de 15 cm. con lindas flores rojas o amarillo-rojizas superpuestas sustentadas por grandes brácteas puntudas. Sépalos abiertos, órganos centrales rojos o amarillo-rojizo, antera amarilla. El glenion del labelo es amplio, circular y veloso.

Plant large, epiphytic, rhizome short, roots slender flexuous, secondary stems erect unifoliate with one basal tubular sheath and a larger 4 cm long inflated sheath covering almost all the upper third. **Leaf** erect oblong-elliptic,

coriaceous, striated, apex sub-obtuse tridenticulate, lamina 12 x 4.2 cm narrowing abruptly below into a channeled 1.5 cm long petiole. **Inflorescence** an erect many flowered 15 cm long raceme including the 9 cm long peduncle, from a brown 8 mm long spathe at the base of the leaf. Floral bracts large, oblique, inflated, apiculated, imbricated, 7 mm long, enclosing both the pedicel and the 2.2 mm long red ovary. Flowers large, red, arranged in two rows to one side of the rachis. **Sepals** similar broadly ovate, obtuse, villous at the edges, papillose-villous within, widespread but deeply connate at the base, 5-veined; the dorsal sepal 6.5 mm long. **Petals** rhombic-suborbicular, the apex incrassate, with crystalline particles at the surface, 1.6 mm high, 1.8 mm wide, 3-veined. **Lip** triangular frontally and laterally, subquadrate obtuse from above, the apex acute, 3 lobed, the callus a fleshy mass ending basally in an elevated transverse bar of soft tissue, and anteriorly in a wide circular glenion capped by a tuft of short hairs. **Column** stout 1.5 mm wide, 1 mm long, the stigmatic arms prominent, the anther yellow.

NOTAS: *Stelis barbuda* es una planta grande reconocible por su larga espiga con muchas flores rojas grandes para el género, aglomeradas, con sépalos abiertos, en dos filas de un lado, por el amplio glenion vellosa, y por sus grandes brácteas dísticas imbricadas que forman el lado opuesto a las flores. Esta especie se podría incluir en la Sección Distichae de Garay (grandes brácteas).

Stelis barbuda is a large plant that may be recognized by its long many flowered raceme with red superposed flowers large for the genus, arranged in two rows to one side of the rachis, the opposite side formed by the large imbricated bracts, the spreading sepals and by its wide pubescent glenion. The species could be included in the Section Distichae of Garay (large bracts).



2

