

**Scaphosepalum panduratum** Luer & Escobar, sp. nov.

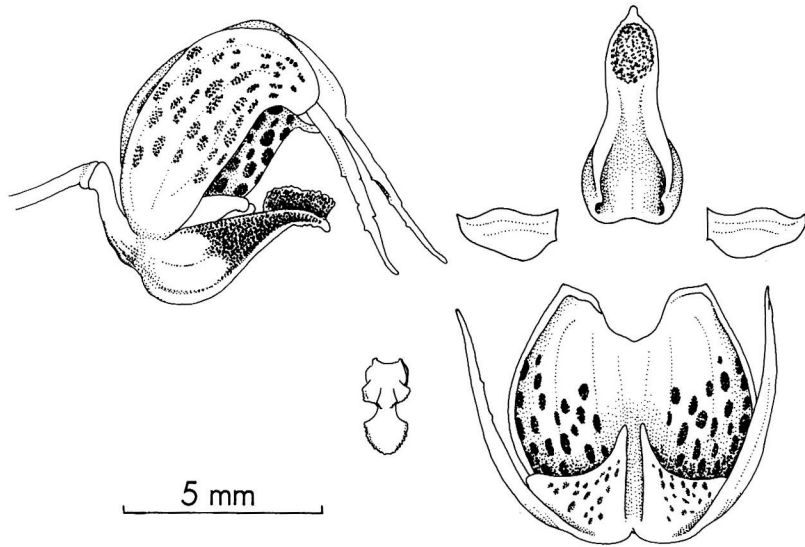
Ety.: From the Latin *panduratus*, "pandurate," referring to the violin-shaped lip.

Species haec *S. swertiifolii* subsp. *exigui* Luer & Escobar affinis, sed habitu floribusque minoribus, sepalis mediani cauda incrassissima, sepalorum lateralium callis minoribus angulo interior acuminato, et petalis acutis differt.

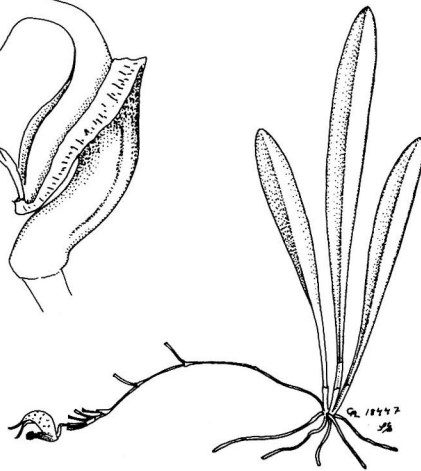
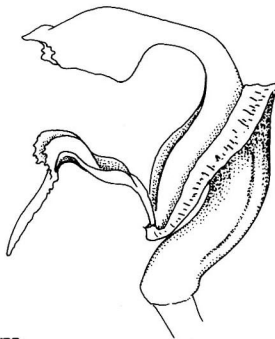
**Plant** small, epiphytic, caespitose; roots slender. Ramicauls erect, slender, 0.5-1 cm long, enclosed by 2-3 tubular sheaths. **Leaf** erect, thinly coriaceous, 4.5-7 cm long including the 1-2 cm long petiole, the blade narrowly elliptical, acute, 0.8-1 cm wide, gradually narrowed below into the subpetiolate base. **Inflorescence** a raceme loose below to congested above, successively several- to many-flowered, 4-8 cm long including the slender, smooth, horizontal to descending peduncle, from low on the ramicaul; floral bracts thin, infundibular, 2 mm long; pedicel 5-10 mm long; ovary smooth, 2.5 mm long; **sepals** spotted and suffused with dark purple, the middle sepal thick, carinate, ovate, concave in the lower half, 5 mm long, 1.5 mm wide, the apex with a thick, verrucose callus; the lateral sepals connate into a concave, ovoid lamina 6.5 mm long, 6 mm wide unexpanded, the apical portion of each lateral sepal rounded, occupied by a thick, well-developed, triangular-lunate, glabrous cushion with the internal angle acuminate, 2.5 mm long, 3 mm wide, dotted with purple, the apices contracted into slender, decurved tails 6 mm long; **petals** obliquely subquadrate, 2.5 mm long, 1.25 mm wide, the apex acute, oblique; **lip** spotted with purple, pandurate, reflexed near the middle, 2.5 mm long, 1.4 mm wide, the narrowed middle with a pair of erect, denticulate laminae, the epichile rounded, erose, the hypochile subquadrate, concave, truncate minutely bilobulate; **column** semiterete, slender, 3 mm long, winged above the middle, with a thick foot equally long.

COLOMBIA: Dept. of Antioquia: Urrao, El Llaveró, alt. 1400 m, collected Jan. 1990 by M. Zapata, flowered in cultivation at Colomborquídeas, Mar. 1997, *R. Escobar 8226* (Holotype: MO), C. Luer illustr. 18447.

This little species is most closely allied to *S. swertiifolium* and its subspecies *exiguum*, but differs in a smaller habit and smaller flowers. In appearance, the flowers are similar, but a thick, verrucose callus is present at the apex of the thick middle sepal. The cushions of the lateral sepals are triangular with the inner angle acuminate. The tips of the petals are acute and oblique. The lips of the two species are very similar with a flabellate, erose epichile, a narrow isthmus with a pair of denticulate lamellae, and a subquadrate hypochile.



2 mm



5 cm