

21. **MAXILLARIA WILLIAMSII** Dodson, sp. nov.

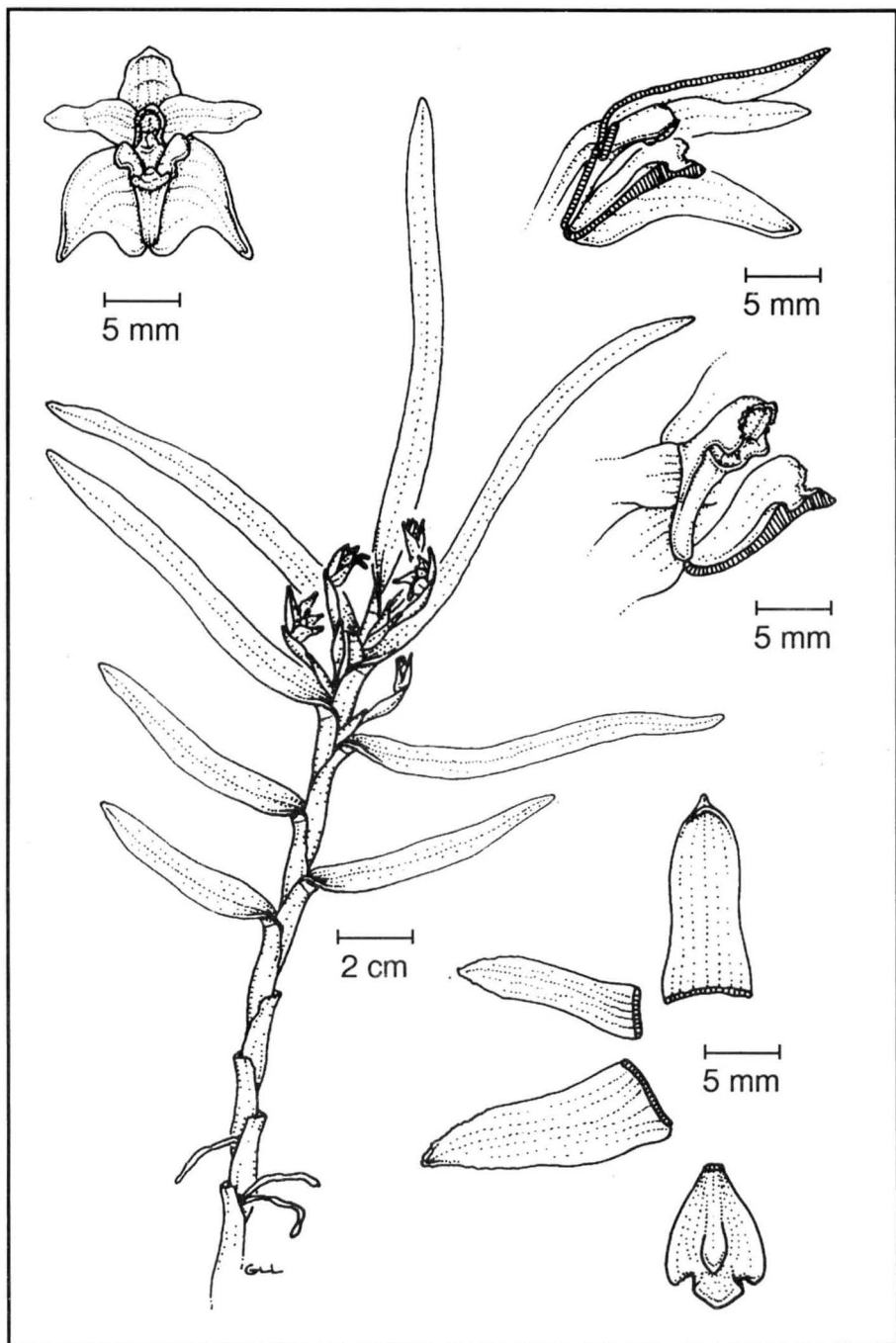
Similis *Maxillariae meridensis* Lindl., a qua differt habitu semierecto, floribus pluribus minoribus, labello obovato, lobulo medio labelli trullato multo brevioris quam lobuli laterales, et segmentis floralibus amplioribus.

Orig. coll.: Ecuador: El Oro: Pasaje to Victoria to Atualpa Paccha, km 30, 1200 m, 20 April 1989, *Dodson, C. H., R. L. Dressler, N. Williams, A. Embree, F. L. Stevenson, & M. Whitten 17947* (RPSC holotype, QCNE).

**OTHER SPECIMENS SEEN:** Ecuador: Esmeraldas: Lita to San Lorenzo, km 6, 650 m, 29 December 1990, *Dodson et al. 18598* (RPSC). Pichincha: Centinela, 550 m, 30 May 1975, *Dodson et al. 6114* (SEL); Sto. Domingo to Quito, below Tandapi, Río Toachi, 900 m, 19 April 1977, *Madison 3899* (SEL).

**ETIMOLOGIA:** Nombrada en honor del Dr. Norris Williams, jefe del departamento de historia natural del Museo del Estado de Florida en Gainesville, quien participó en la recolección del ejemplar tipo.

**ETYMOLOGY:** Named to honor Dr. Norris Williams, Chairman of the Department of Natural History of the Florida State Museum at Gainesville, Florida, who participated in the collection of the type specimen.



**MAXILLARIA WILLIAMSII** Dodson.

Plant erect. Pseudobulbos very inconspicuous, 1-leaved, surrounded by 3 to 4 foliaceous sheaths, remote on elongate stems. Stems arcuate to erect, occasionally branched, to 0.8 cm thick, 15-20 cm between pseudobulbs, surrounded by appressed, verrucose sheaths with articulated leaves at their apex. Leaves mostly deciduous on the lower portions, oblong, acute at the apex, cuneate at the base, to 15 x 1.3 cm. Numerous scapes produced from the foliaceous sheaths at the base of the pseudobulbs, 1-flowered; peduncles to 2 cm long, surrounded by narrow, tubular, imbricating sheaths. Sepals and petals yellow-white, the lip speckled with red, the apical lobe red on both sides, the anther cap red, without floral fragrance. Sepals and petals free; dorsal sepal oblong-ovate, subpandurate, acute at the apex, concave, 1.5 x 0.7 cm; lateral sepals obliquely oblong-ovate, concave, semi-erect in natural position, 1.8 x 0.7 cm; petals oblong, spreading at the apices, to 1.5 x 0.3 cm; lip erect, parallel to the column, to 12 x 0.7 cm; sharply 3-lobed near the apex, obovate in outline, the lateral lobes erect, obovate, the apical lobe ovate-trullate, obtuse, fleshy; callus tongue-shaped, obtuse at the apex; column short, to 5 mm long, clavate, sulcate on the underside, produced into an elongate foot.

**NOTAS:** Esta especie pertenece al Grupo Meridensis y se distingue fácilmente de otras del grupo por la planta semierecta, las numerosas flores más pequeñas, el labelo obovado en contorno, el lóbulo apical del labelo mucho más corto que los laterales, y los segmentos florales amplios. Las flores no producen fragancia durante el día como en *Maxillaria embreei*.

**NOTES:** This species belongs to the Meridensis Group but is easily distinguished by the semi-erect plant, the numerous smaller flowers, the lip obovate in outline, the trullate apical lobe of the lip much shorter than the lateral lobes, and the broader floral segments. The flowers do not produce fragrance during the day as in *Maxillaria embreei*.