

**Lepanthes pubicaulis** *C. Schweinfurth sp. nov.*

Herba pusilla, caespitosa, epiphytica. Caules pergraciles, vaginis tubulatis aretis pilosis cum ostiis ovatis hispidis omnino celati. Folium unicum, ellipticum vel late ovale, apice subacutum vel obtusum, basi breviter petiolatum. Inflorescentiae racemosae, dense pauci- vel multiflorae, quam folium maxima pro parte breviores. Flores parvi, membranacei. Sepala glabra. Sepalum dorsale ovato-lanceolatum, longe acuminatum. Sepala lateralialia valde similia sed paulo minora. Petala transverse bilobata; lobi subaequales, anguste lanceolati. Labellum

columnae parti basali adnatum, apice trilobatum, basi truncato-cordatum; lobi laterales comparate magni, oblique semiovati, apice incurvi; lobus medius minutus. Columna gracilis.

Plant small, epiphytic, caespitose, about 8 cm. high. Roots fibrous, numerous. Stems very slender, erect-spreading, up to 5.6 cm. long, entirely concealed by six to eight close tubular densely pilose sheaths which terminate in an ovate spreading marginate pilose mouth. Leaf solitary, terminal, erect or erect-spreading, elliptic to broadly oval, up to 2.7 cm. long and 1.5 cm. wide (commonly about 2 cm. long and 1 cm. wide), subacute to obtuse at the minutely tridenticulate apex, cuneate below and gradually narrowed to a short petiole, many-nerved with three more prominent nerves. Racemes terminal, axillary, three or four (rarely five), densely 2- to 16-flowered, commonly more or less shorter than the subtending leaf but rarely surpassing the leaf, about 3 cm. or less long including the short naked peduncle, erect or arcuate. Floral bracts subapproximate, infundibuliform. Flowers small, reddish yellow, membranaceous and wide-spreading in anthesis. Sepals glabrous, connate below. Dorsal sepal ovate-lanceolate, long-acuminate, 3-nerved, about 7.4 mm. long and 2.6 mm. wide across the base of the free portion. Lateral sepals similar, ovate-lanceolate, long-acuminate, prominently 1-nerved with a short supplementary nerve, about 7 mm. long along the central nerve and 2.2 mm. wide across the base of the free portion. Petals transversely bilobed with subequal more or less divergent lobes; posterior lobe narrowly lanceolate, gradually narrowed to an obtuse tip, about 3.8 mm. long and 0.7 mm. wide at the base of the free part; anterior lobe about equally large, oblong-lanceolate. Lip adnate to the lower part of the column, broadly triangular-ovate in outline, prominently 3-lobed near the apex, truncate-

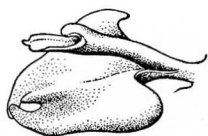
cordate at the base, about 2.2 mm. long from the center of the base to the apex of a lateral lobe and 2.6 mm. wide at the base; lateral lobes relatively large, obliquely semiovate, incurved above, obtuse; mid-lobe minute, triangular-ovate. Column slender, shorter than the lip, more or less dilated above.

This little plant resembles *Lepanthes pumila* C. Schweinf. in habit, but not in floral structure. It differs from *L. cassidea* Reichb.f. in its oval leaves and lack of cilia on the petals and lip. It varies from *L. Millei* Schltr. in having densely flowered racemes and dissimilar petals which lack a median lobule.

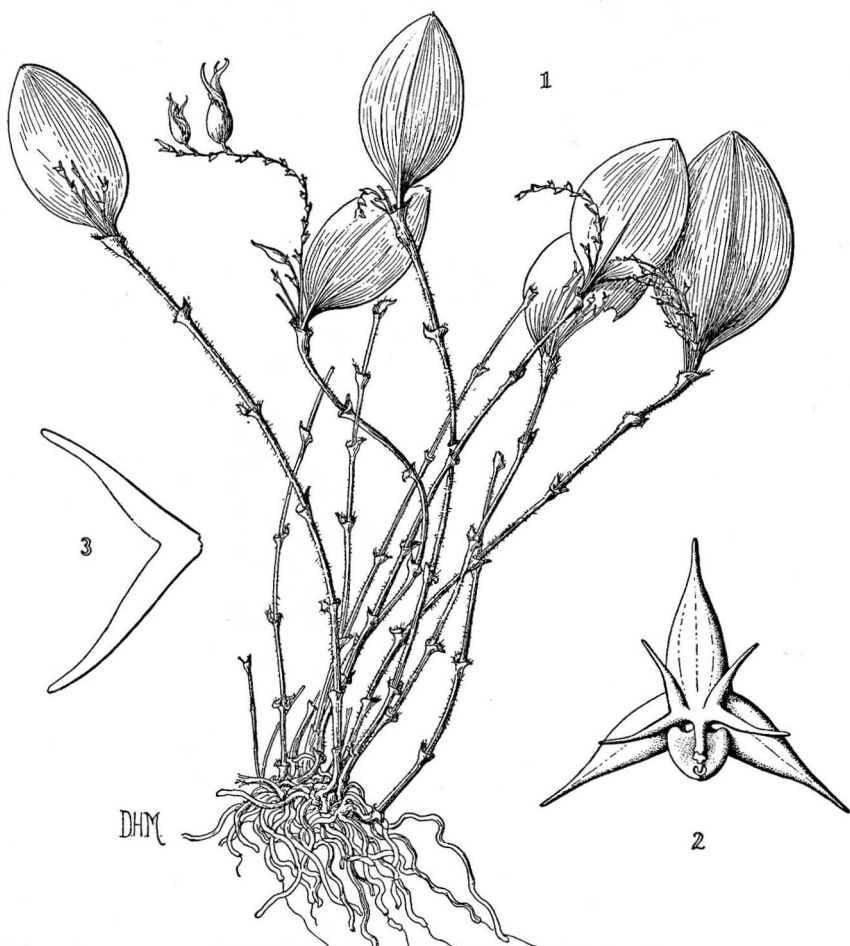
Cuzco: Prov. of Quispicanchis, Cachubamba, Marcapata, at 2800 meters altitude, December 12, 1943, C. Vargas 3817 (TYPE in Herb. Ames No. 65059).

LEPANTHES  
*pubicaulis*  
C. Schweinf.

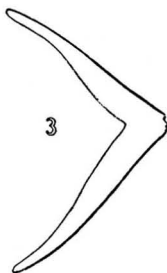
4



1



3



DHM

2

