

***Lepanthes cribbii* Pupulin, sp. nov.** affinis *Lepanthidi mentosae* Luer sed sepalis maculis cinnabarinis notatis (versus sepalis flavis immaculatis), petalis labelloque scarlatinis (versus petalis aurantiacis rubro suffusis et labello rubro-aurantiaco), labelli corpo tenui emarginato (versus in mento prominenti protrudenti) dignoscenda. Typus: Costa Rica, *Pupulin & Barboza* 3211 (holotypus USJ; isotypus USJ-Spiritus).

*Plant* epiphytic, caespitose, patent to pendent, to 8 cm tall. *Roots* flexuous, about 0.5 mm in diameter. *Ramicauls* 1.4–5 cm long, covered by 5–11 lepanthiform, microscopically ciliate sheaths, the ostia obliquely dilated with microciliate margins. *Leaf* pendent, coriaceous, narrowly ovate, 2.3–3.1 × 0.9–

1.5 cm, emarginate, abaxially provided with a short apiculus, the base widely cuneate to subrounded, narrowed into a petiole 1 mm long. *Inflorescence* racemose, distichous, congested, successively flowered, borne behind the leaf, to 3 cm long; peduncle filiform, to 1.5 cm long. *Floral bracts* triangular-ovate, muriculate, about 1 mm long. *Pedicel* 1.5 mm long. *Ovary* clavate, rounded in section, 1 mm long. *Flowers* about 10 × 5 mm, the sepals hyaline, pale yellow, blotched with blood-red between nerves; the petals, the lip and column red. *Dorsal sepal* 5.5 × 3 mm, ovate, acuminate, concave, dorsally carinate, with denticulate margins, connate to the lateral sepals for about 1 mm. *Lateral sepals* obliquely subfalcate-ovate, 5 × 2.5 mm, acuminate, concave, dorsally carinate, with denticulate margins, the apices convergent, connate at the base 1.5 mm. *Petals* transversely bilobed, 0.5 × 3 mm, the lobes subfalcate-linear, rounded. *Lip* bilaminar, 1.3 × 1.0 mm, minutely pubescent, the blades dolabriform, acute, the connectives connate to the base of column, the body emarginate, provided with a tooth-like, puberulent, reflexed appendix, born under the apex of body. *Column* 1.5 mm long, with the anther dorsal, the stigma subapical (Fig. 1).

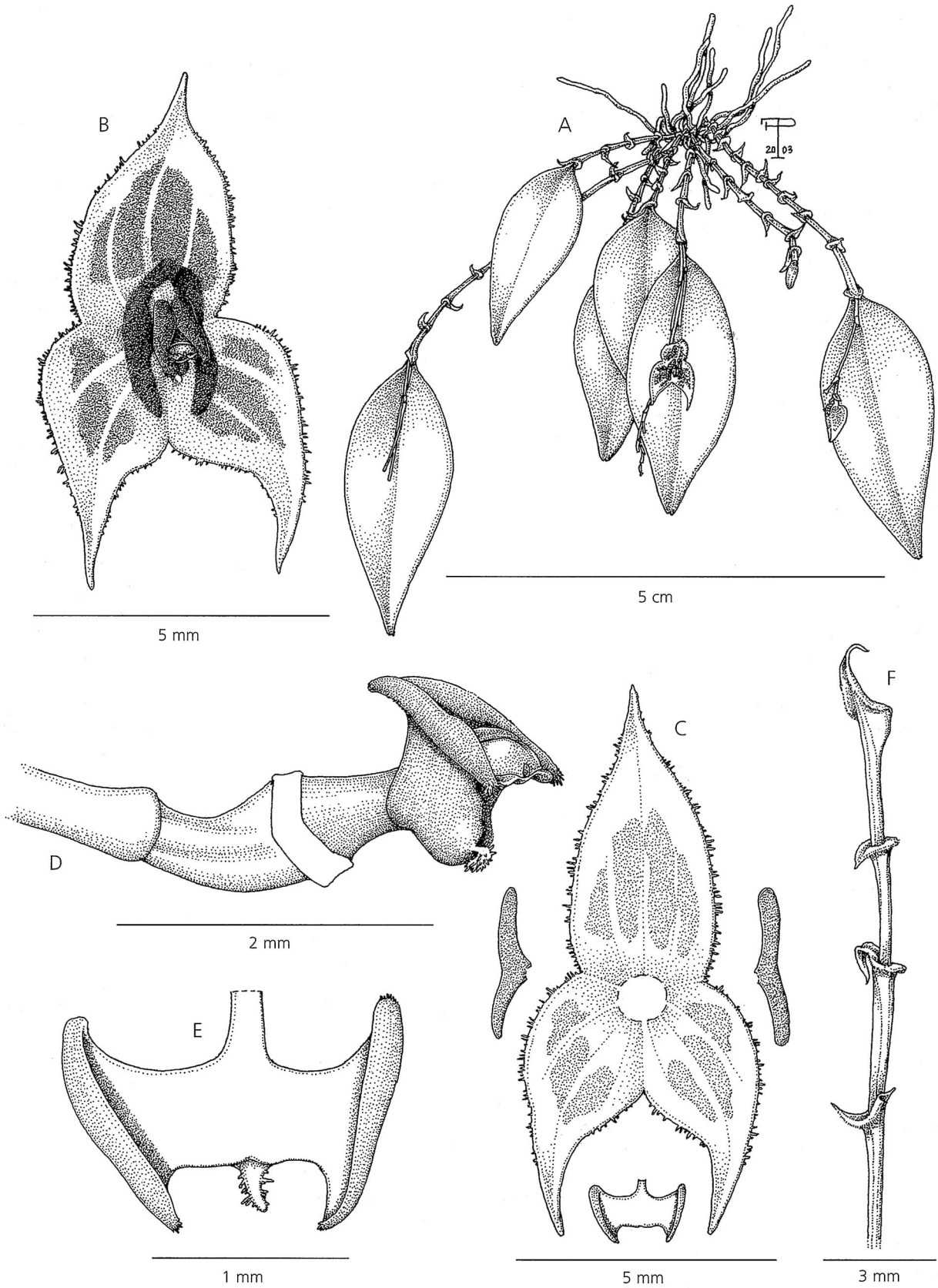
**COSTA RICA.** Puntarenas: Monteverde, Los Puentes, 1500 m, lower montane cloud forest, 2 June 2001, flowered in cultivation at Jardín Botánico Lankester, Universidad de Costa Rica, 11 July 2003, *F. Pupulin & G. Barboza* 3211 (holotype, USJ; isotype, USJ-Spirit). Monteverde, without collector, flowered in cultivation at Jardín Botánico Lankester, Universidad de Costa Rica, 21 Jan. 2004, *F. Pupulin* 5078 (paratype, USJ-Spirit).

**HABITAT.** Epiphytic in premontane, transition to lower montane cloud forest.

Accepted for publication August 2004.

<sup>1</sup> Jardín Botánico Lankester, Universidad de Costa Rica. P.O. Box 1031-7050 Cartago, Costa Rica, A.C.

<sup>2</sup> Author for correspondence. E-mail: fpupulin@cariari.ucr.ac.cr



**Fig. 1.** *Lepanthes cribbii*. **A** habit; **B** flower; **C** perianth dissected; **D** lip and column, lateral view; **E** lip; **F** ramicaul. All from *Pupulin & Barboza* 3211. DRAWN BY F. PUPULIN.