

*Elleanthus ligularis* Dressler & Bogarín, *sp. nov.*

TYPE: Costa Rica, Cartago: Jiménez, Pejivalle, La Marta, shores of Río Gato, 9°47'27.2"N 83°41'37.2"W, 750 m, premontane wet forest, on trees along pastures edges and overhanging the river, 3 November 2006, collected by *F. Pupulin 6360, R.L. Dressler, R. Gómez, A. Karremans & G. Rojas*. Cultivated in Lankester Botanical Garden, accession JBL-14915, flowered and pressed from cultivation, 14 Feb. 2006, *R.L. Dressler 6836B* (holotype: CR, isotype: JBL-spirit).

*Elleantho graminifolio* (Barb. Rodr.) Løjtnant affinis, a qua habitu majore, foliis latioribus, base labelli latiore imprimis differt.

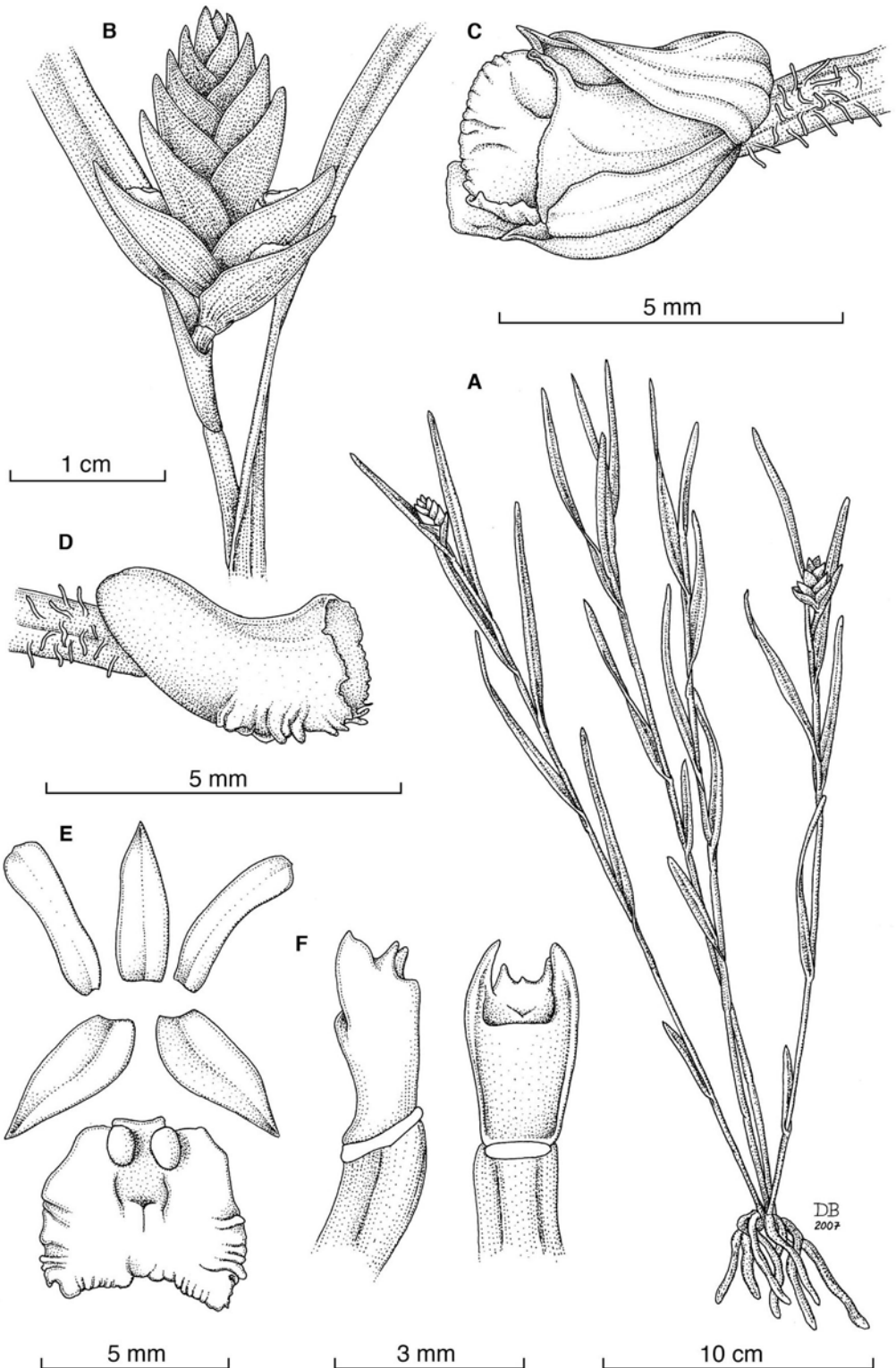


FIGURE 1. *Elleanthus ligularis* Dressler & Bogarín. A – Habit. B – Inflorescence. C - Flower, in normal position. D - Lip, with sepals and petals removed. E - Perianth parts, flattened. F - Column, lateral and ventral views. Drawn from the holotype by Diego Bogarín.

*Plant* epiphytic, caespitose. *Roots* 0.6-2 mm in diameter; stems 20-33 cm, x 0.7 mm basally. *Leaves* up to 8 per stem, 4.8-9 cm x 4-5.5 mm, ligulate, apices tridenticulate, apically keeled beneath. *Inflorescences* subovate, 15-20 x 9-17 mm (without including the variable outermost bract, 13-25 mm long), other bracts 8-10.5 x 5-6.5 mm, carinate, narrowly obtuse when flattened. *Ovary* 3 mm dorsally, 2 mm ventrally. *Dorsal sepal* 4.2-4.5 x 1.3-1.5 mm, broadly lanceolate. *Lateral sepals* 4-4.5 x 1.3-2 mm, asymmetrically ovate-lanceolate. *Petals* 4.5-5 x 1.5-1.6 mm, spatulate-oblongate. *Lip* 4-5 x 5-6 mm, broadly obtriangular-subquadrate, the corners markedly fimbriate, 2 basal calli ca. 1 x 0.7 mm, short-stalked. *Column* 2.5 mm with anther (ca. 1 mm).

PARATYPES: Costa Rica. **Alajuela:** Upala, Bijagua, Zapote, desvío a la izquierda ca. 1 km. después del puente sobre Río Zapote; 10°45'21.0" N 85°04'56.9" W, 650-700 m. Cultivated in Lankester Botanical Garden, accession JBL-13885, pressed from cultivation, 6 Jan. 2007, R. Dressler 6836B (USJ). Upala, Bijagua, Zapote, desvío a la izquierda ca. 1 km después del puente sobre Río Zapote en sentido Bijagua-Pueblo Nuevo, Finca La Escondida, 10°45'21.0"N 85°04'56.9"W, 650-700 m, bosque muy húmedo tropical, transición a premontano, epífitas en bordes de potreros, 3 Febrero 2006, D. Bogarín 2467, J. Barrantes, R.L. Dressler, R. Gómez & A. Rojas

(CR). **Limón:** Pococí, Guápiles, 5 km al sur de la carretera, cerca de la Finca Tintoreras y el Río Blanco, 10°02'16.2" N, 83°53'02.1" W, bosque muy húmedo tropical, R.L. Dressler 6761, D. Bogarín, J. Gómez-Laurito & F. Pupulin (JBL-spirit, CR). Pococí, Guápiles, San José-Limón highway, km 47, ca. 500 m after the entrance of Rain Forest Aerial Tram, Quebrada Molinete, 10°10'43"N 83°54'57"W, 470-500 m, tropical wet, transition to premontane wet forest, epiphytic in primary forest along the river banks, 9 July 2004, F. Pupulin 5260 & D. Bogarín (CR).

Other specimens of *E. ligularis* previously seen or reported: COSTA RICA: Jiménez & Lankester 2076 (AAU, AMES, Løjtnant, 1976); **Limón:** 700 - 900 m, 09°27'00"N 82°59'24"W, 24 Sep 1994, G. Gallardo & E. Lépiz 302 (MO); PANAMA: Veraguas: Río Dos Bocas, 450 - 550 m, 08°33'03"N 081°10'17"W, 31 Aug 1974, T. Croat 27756 (MO).

ETYMOLOGY: The epithet *ligularis* or "strap-shaped" refers to the characteristic form of the leaves long and narrow with the sides nearly parallel.

*Elleanthus ligularis* most closely resembles *E. graminifolius*, but the plants are much larger and the leaves are markedly wider; further, the lip is much wider near the base. We offer a key to the known Mesoamerican species of Section *Chloidelyna*, as well as *E. muscicola*, apparently the only other Mesoamerican species with conduplicate leaves.

#### KEY TO THE SPECIES OF *ELLEANTHUS* SECTION *CHLOIDELYNA*

- Leaves conduplicate, linear to oblong-ovate; obtuse or tridentate; bracts always distichous ..... *Elleanthus* Section *Chloidelyna*
1. Leaves narrowly ovate or oblong, obtuse or retuse ..... *E. muscicola*
1. Leaves linear to narrowly ligulate, acute to tridenticulate ..... 2
2. Floral bracts well separated, not overlapping ..... 3
3. Leaves 1-2 cm long; inflorescence of 3-4 bracts on filiform rachis; plant sprawling, upper stems rooting and branching ..... *E. stolonifer*
3. Leaves 3-5 cm long; inflorescence of 8-10 bracts; stems rooting only basally ..... 4
4. Leaves 1-2 mm wide; inflorescence surpassing upper leaves; bracts 10-15 mm long ..... *E. fractiflexus*
4. Leaves less than 1 mm wide; upper leaves subequal to inflorescence; bracts 5-8 mm long .... *E. poiformis*
2. Floral bracts densely clustered, overlapping ..... 5
5. Leaves mostly less than 1 mm wide; bracts sharply acuminate ..... *E. tillandsioides*
5. Leaves mostly more than 1.5 mm wide; bracts obtuse or subobtuse ..... 6
6. Leaves 0.8-2 mm wide; lip obtriangular ..... *E. graminifolius*
6. Leaves 4-5.5 mm wide; lip subquadrate ..... *E. ligularis*