

Chondrorhyncha caudata Ackerman, sp. nov.

Plate 2.

Species nova foliis griseo-viridi cum margine modice revoluto et convexiter arcuato pro irregularibus longitudinibus, vaginis inflatis, labello profunde cochleariformi carnosio cum apice caudato deflexo, calli crista humili transverso cum prominentia mediana dilute elevata subquadrata vel bifida a speciebus adhuc discriptis recedens.

Plant epiphytic, caespitose, lacking pseudobulbs. Roots about 2 mm thick, white with several layers of velamen cells. Leaves several, grey-green, distichous, erect-spreading, coriaceous, glabrous; sheaths equitant, clasping, inflated especially toward the base, 1-4 cm long; lamina conduplicate, margin entire, wavy for irregular lengths, slightly recurved, blades of inner leaves much larger than those of the outermost, lanceolate-oblong, acuminate, underside of the leaf greyer and with the mid-vein prominently raised, 9-20 cm long, 1.5-3.5 cm wide. Inflorescence lateral from axils of lower leaf sheaths, simple, erect, peduncle 3-4 cm long. Flowers conspicuous, 3-4 cm across, glabrous. Sepals and petals spreading, white and lightly suffused with yellow or green at their apices. Dorsal sepal oblong-lanceolate, acute, concave, entire, 14-18 mm long, 5-6 mm wide. Lateral sepals ovate-lanceolate, acute, concave at the base, broadly attached to the base of the column foot, 18-21 mm long, 5-9 mm wide. Petals oblong, abruptly acute, entire, obliquely and broadly attached to nearly the full length of the column foot, 15-16 mm long, 6 mm wide. Labellum fleshy, cochleariform, conspicuously caudate, deflexed, entire, 13-16 mm long, white with a yellow apex and spotted red or emaculate and suffused red along the margins, natural conformation deeper than broad, the margins slightly enrolled forming a tubular throat with the column and column foot; callus a low, transverse, fleshy ridge with a median, subquadrate or bifid thickening, the ridge situated just below the middle of the lip and extending halfway up the sides; claw of the lip geniculate, 1.5-2.0 mm long, 1 mm wide, attached to the apex of the column foot. Column white with a few red spots ventrally, slender, slightly arched, gradually dilated toward the apex, semiterete, slightly concave beneath, 10-11 mm long; column foot arched back and downward, tapered, lying adjacent to the ovary, 7-8 mm long; stigma a deep transverse slit distal to the greatest width of the column; rostellum tridentate, lateral teeth minute, mid-tooth relatively long, filiform, 1 mm long; pollinia 4, composed of two unequal pairs, clavate depressed, viscidium triangular, stipe short. Pedicellate ovary 7-10 mm long; subtended by two bracts, the lowermost bract clasping, cordate-orbicular,

1981]

ACKERMAN: NEW *CHONDRORHYNCHA*

301

5-6 mm long.

TYPE: *ECUADOR*: without specific locality, flowered in cultivation at SEL greenhouses, 17 June and 1 August 1977, and 24 July 1978, *J. D. Ackerman 1259* (HOLOTYPE: SEL).

ETYMOLOGY: Named for the tail-like apex of the lip.

ADDITIONAL MATERIAL EXAMINED: *ECUADOR*: ZAMORA: Loja to Zamora Rd., km 42, alt. 1400-1500 m, 1962(?), *C. H. Dodson s.n.* (SEL), flowers only, spirit collection.

The type specimen was purchased from Ilgenfritz Orchids in 1971 by Mr. F L Stevenson who graciously donated the plant to the Marie Selby Botanical Gardens (greenhouse accession number SEL 77-2330). Kodachrome slides of presumably the Dodson specimen are deposited in the OIC slide collection.

Unlike most species of the *Chondrorhyncha* complex, *C. caudata* is easily recognized without flowers. The grey green leaves with their wavy margins and the inflated sheaths are distinctive. *Chondrorhyncha cornuta* Garay appears to be its closest relative. The labellum is similar in both species. *Chondrorhyncha cornuta* differs by its much larger flowers, erose labellum, and ventrally pubescent column. Moreover, the apex of the lip is porrect and more horn-like than tail-like.

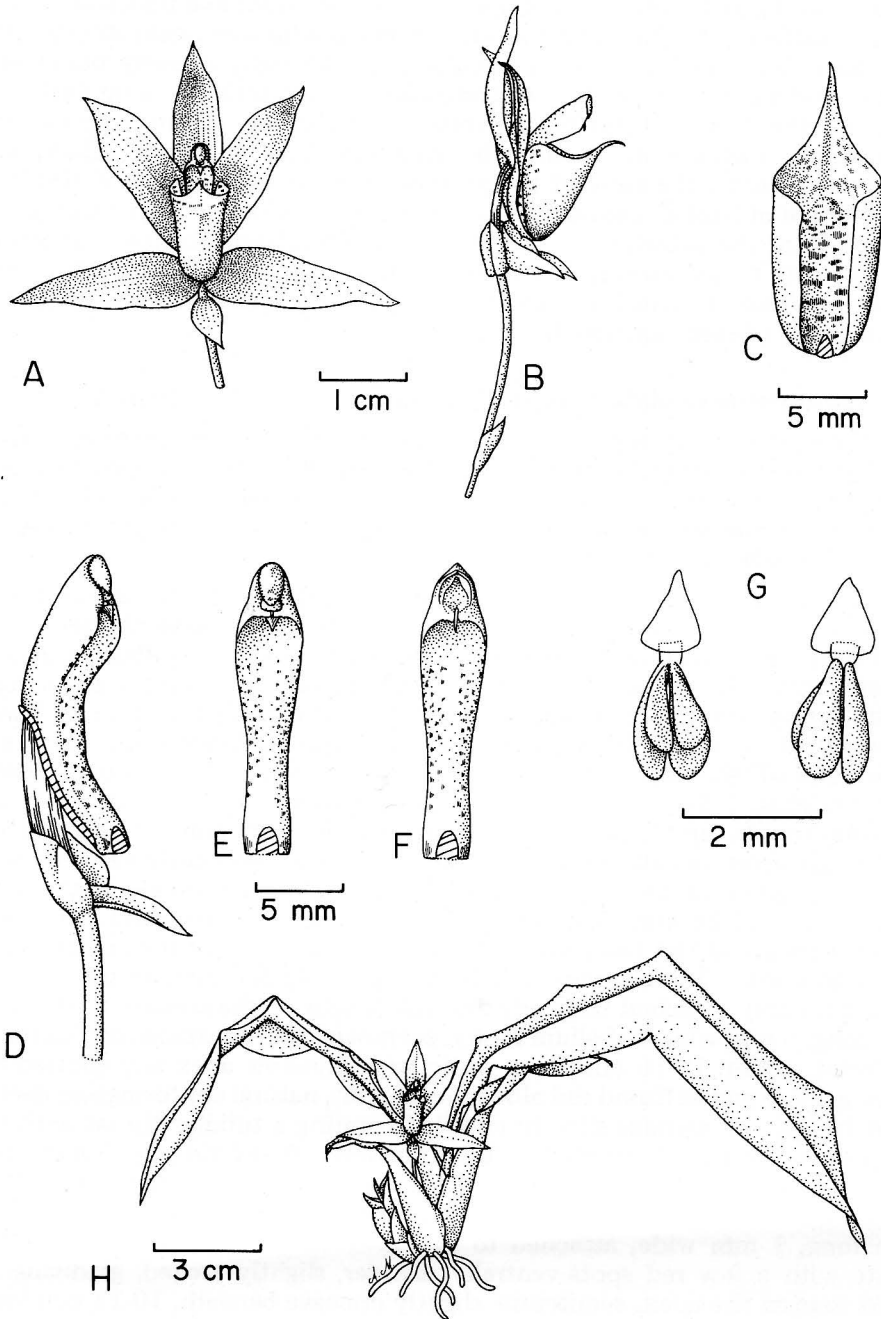


Plate 2. *Chondrorhyncha caudata*. A. Flower front view. B. Flower side view. C. Labelum viewed from above. D. Flower with perianth parts removed. E. Column and column foot intact, viewed from below. F. Column with anther removed. G. Pollinarium viewed from below and above. H. Habit. Drawn from a live specimen.